

The organisation of the English healthcare system

Katie Swarbrick
Associate Nursing Director

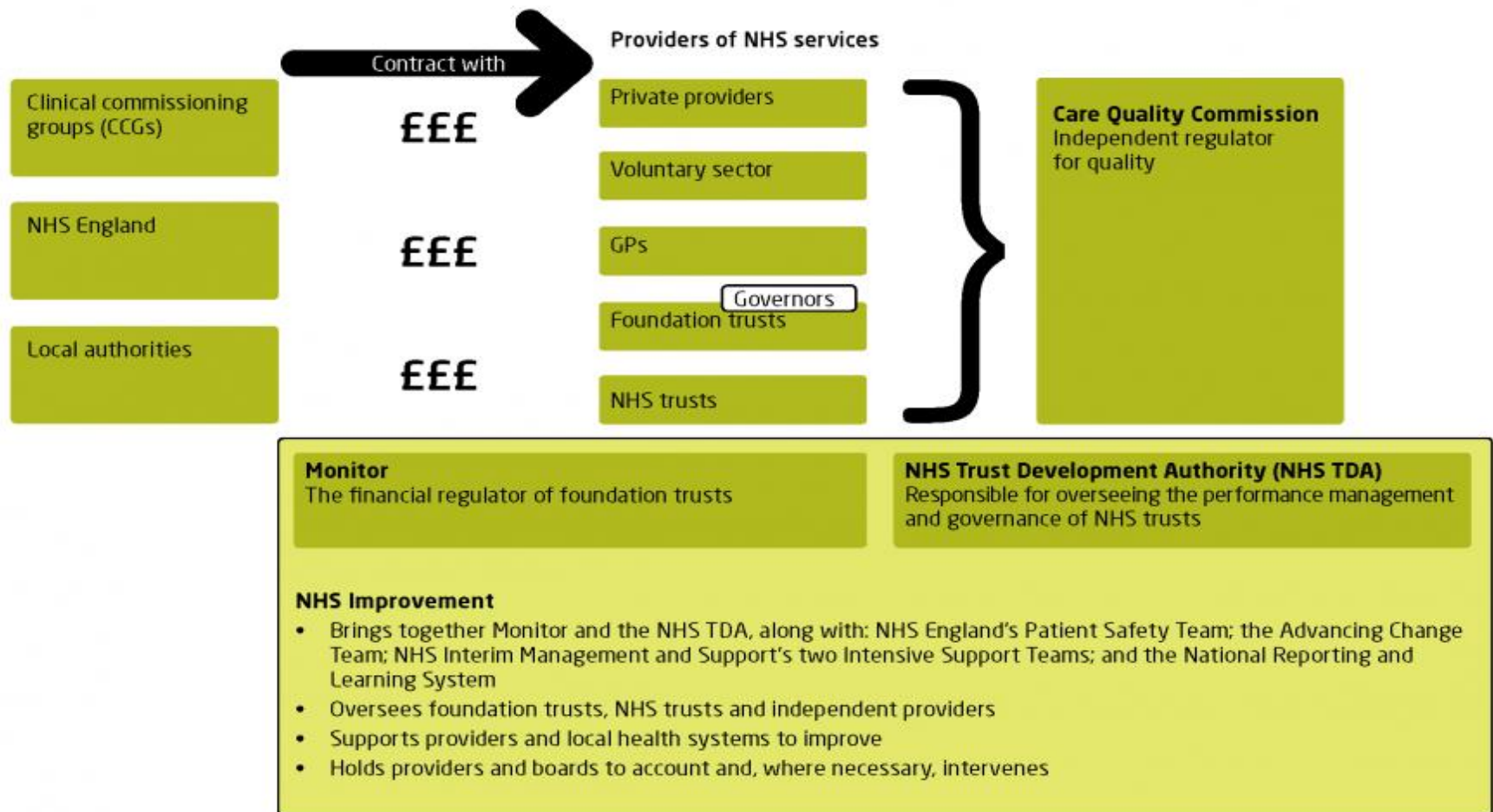


The National Health Service (NHS)

- The Health Service's founding principles – of care for all, on the basis of need not ability to pay – have stood the test of time.
- The NHS is straightforward. It does a good job for individual patients, offering high quality care for an ever-expanding range of conditions. It reduces insecurity for families, especially at times of economic uncertainty and dislocation, because access to care is not tied to your job or your income.
- Better Health
- Better Care
- Financial Sustainability

The NHS is 70 years old in 2018

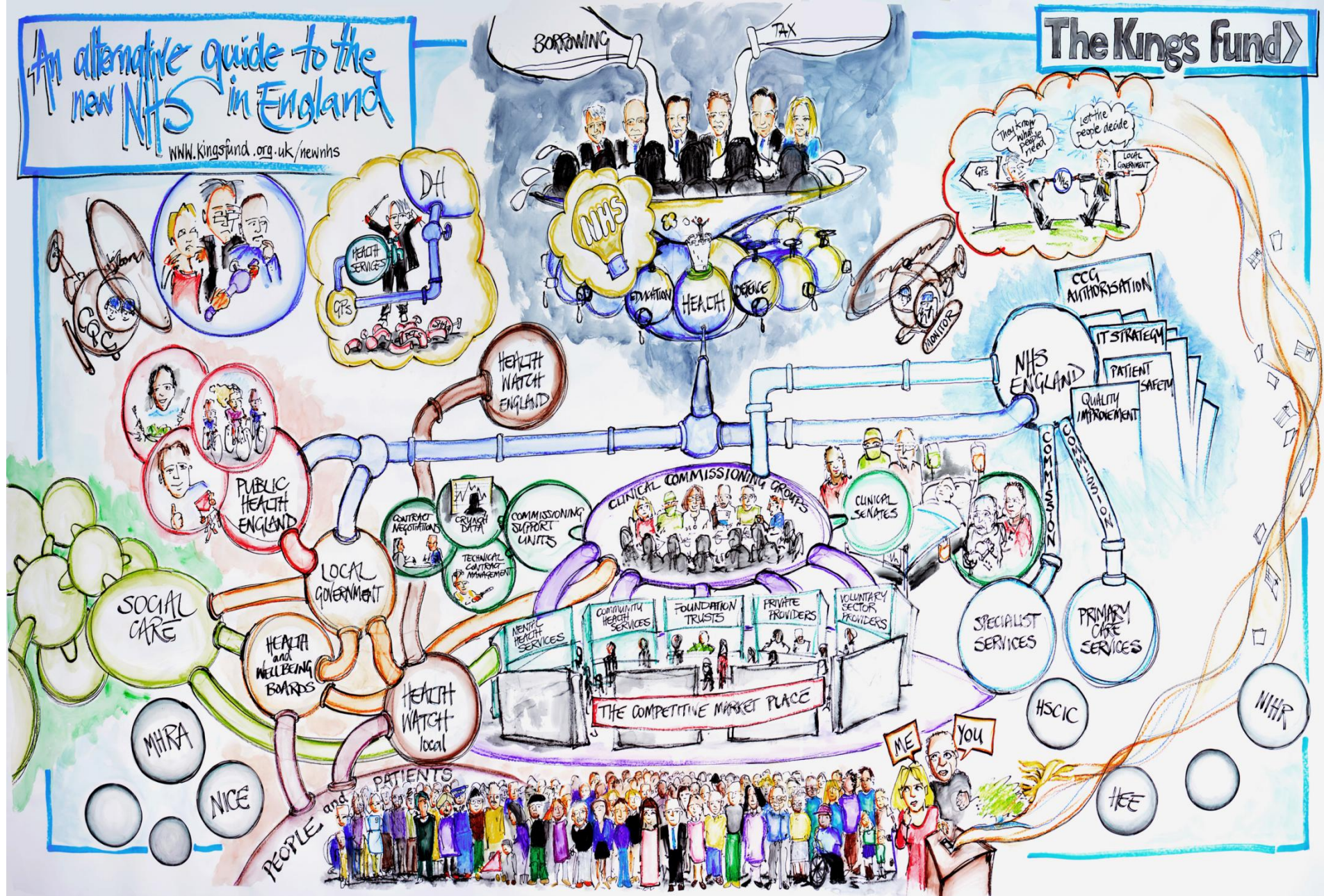
The new NHS: how providers are regulated and commissioned



An alternative guide to the new NHS in England

www.kingsfund.org.uk/newnhs

The Kings fund

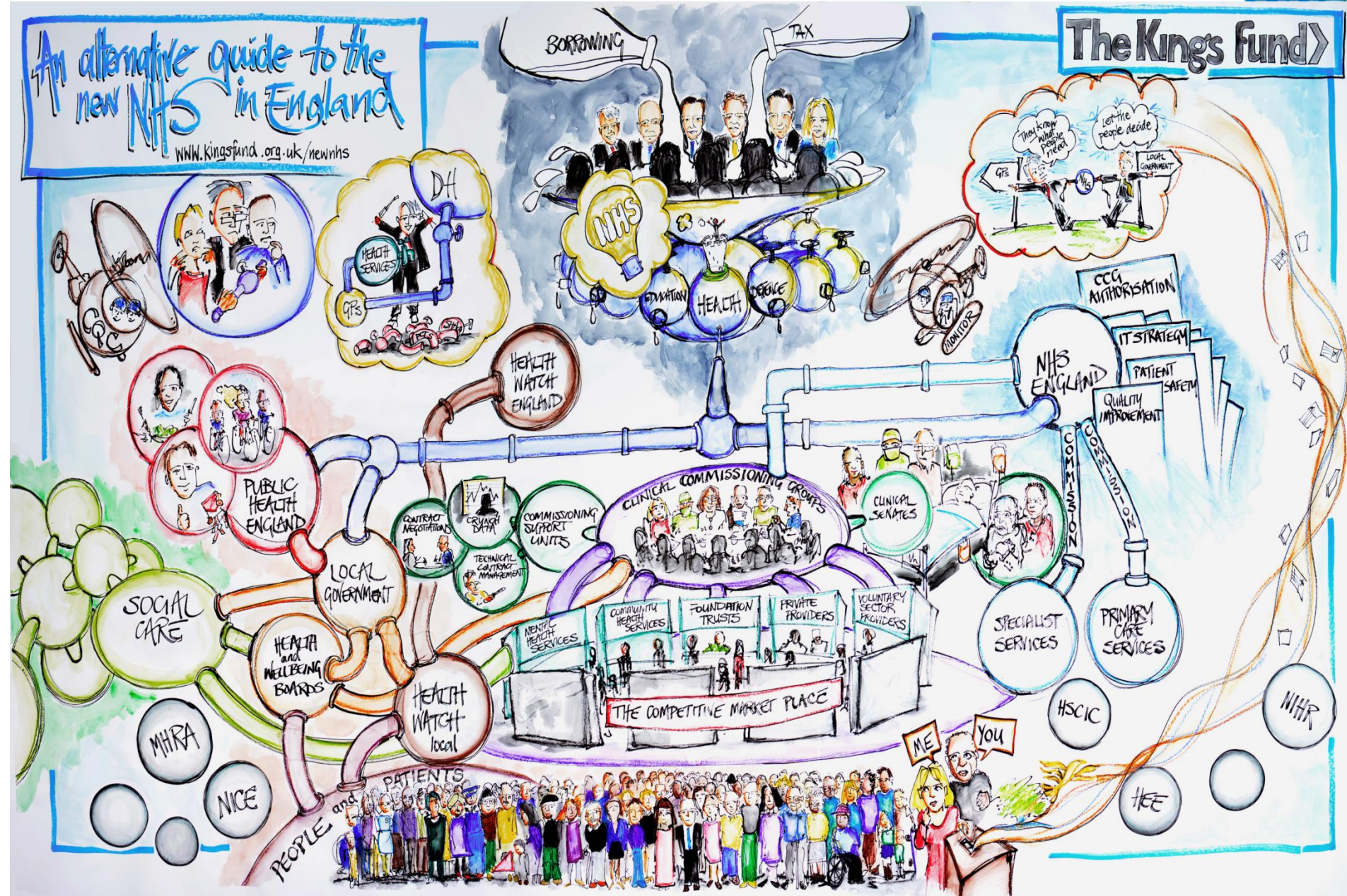


Excellent care with compassion

An alternative guide to the new NHS in England

www.kingsfund.org.uk/newnhs

The Kings fund



Excellent care with compassion

- <https://youtu.be/8CSp6HsQVtw>
- <https://youtu.be/8CSp6HsQVtw?t=390>
- <https://www.kingsfund.org.uk/projects/nhs-65/alternative-guide-new-nhs-england>

Nursing and Midwifery Council (NMC)



- IPASVI - external aim is protection of the citizen/user.
- NMC - Statutory role is to protect the public
- IPASVI - must ensure their level of competence, exert discipline, counteract abuses, be sure that nurses comply with the Code of Ethics and professional Conduct...
- NMC – Set standards for education and professional conduct, to ensure Nurses and Midwives have the appropriate skills and competencies. Keep a register of all nurses and midwives who have met the standards.

NMC – registering as a nurse

- A nurse or midwife is **always accountable for their own practice.** This responsibility cannot be delegated elsewhere as the nurse or midwife is recognised as practising autonomously.
- Everyone on the NMC register must ensure that they are competent in their sphere of practice and use evidence-based learning and experience to maintain their expertise, whatever their employment circumstances.

NMC – Eligibility for registration

In order to be considered for recognition and registration, you must fulfil one of the following criteria:

- You are an EU national and have been trained and registered in an EU or EEA member state.
- You are an EU national and were trained in a country outside the EU or EEA but have been registered in an EU member state and have been lawfully practising in that member state for at least three consecutive years.

How the register is organised

- The register for first level nurses is divided into four fields of practice:
 - Adult nursing
 - Mental health nursing
 - Learning disabilities nursing
 - Children's nursing
- Adult nurses are known in the EU as nurses responsible for general care.

The NMC Code

- *The Code: Professional standards of practice and behaviour for nurses and midwives* (NMC, 2015) contains the professional standards that registered nurses and midwives must uphold. UK nurses and midwives must act in line with the Code
- To read the NMC Code, please go to our website www.nmc.org.uk/code

Steps to NMC Registration

Step 1

**Assessment and
recognition of
qualifications**

Step 2

**English
Language
Controls**

Step 3

**Application for
Entry to the
Register**

International English Language Testing System (IELTS)

Occupational English Test (OET)

or another test which meets these standards.

Discussions about employer assurance

<https://youtu.be/mEwIHWQd61o?t=16>
<https://youtu.be/mEwIHWQd61o>



Excellent care with compassion



Excellent care with compassion



Excellent care with compassion



Excellent care with compassion



Excellent care with compassion